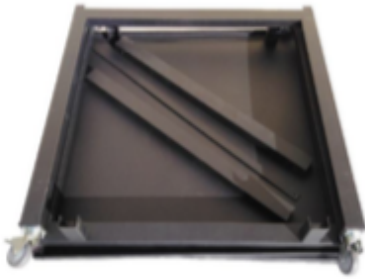


Montana Spazioso Cart Manual

1



2



3



4



- 1- Verify you have all the right tools to build the cart you will need a size 10 key to tighten the screws.
- 2- Start by attaching the two wheeled structure with the beams and secure them tightly.
- 3- After this you will need to attach the tool tray and the structure holder beneath.
- 4- Attach the truss beam to the cart to secure it. The cart is now ready to be used.

Build time: 8 minutes